



LONDON  
GYPSIES &  
TRAVELLERS

Celebrating 25 years  
challenging perceptions, changing lives

# 2023 Funders

BBC Children in Need

The Henry Smith Charity

The Irish Government Emigrant Support Programme

The Joseph Rowntree Charitable Trust

The Lloyds Bank Foundation

The London Borough of Hackney

The London Community Foundation

The Oak Foundation

Trust for London

The National Lottery Community Fund  
(Civil Society Roots fund)

Moving for Change



# A message from the Chair

**It is 25 years since London Gypsies and Travellers became an independent charity, and this anniversary provides an opportunity to reflect on what has changed for Gypsies and Travellers over this time.**

An ever-changing environment in politics, policies, and legislation has had a significant impact on the community. Some things have changed for the better, but at times it also feels as though we have been going round in circles. Few sites have been built and the experience of discrimination is still very present in our daily lives. Throughout this time, LGT has consistently fought for



equality and against discrimination, and been dedicated to keeping Gypsies and Travellers included in the decisions that affect them. At one end of the scale, it has consistently

**LGT's first annual report in 1998.**

**The organisation was originally called the London Gypsy and Traveller Unit**

supported community members facing everyday challenges. At the other it has opposed damaging policy and legislation changes at the highest level. We can look back at the many campaigns that Gypsies and Travellers have been involved in over 25 years and feel proud that we have raised our voices at crucial times when under threat.

Performing the role of Chair of LGT trustees over the past year has been empowering for me. It is a privilege to work with a team that is so passionate, skilled, and professional.

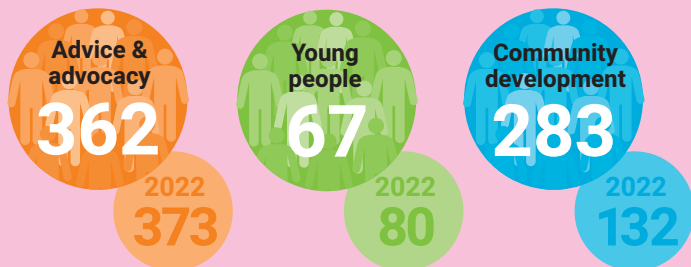
We want Gypsies and Travellers to be in positions of influence on both our board and staff team. But we also need to consider the challenges they can face when stepping into leadership roles. So we now have a good strategy in place for ensuring that the people we need have the skills that they need, as we strive for meaningful representation from all parts of the community in London.

***Helena Kiely-Savin***



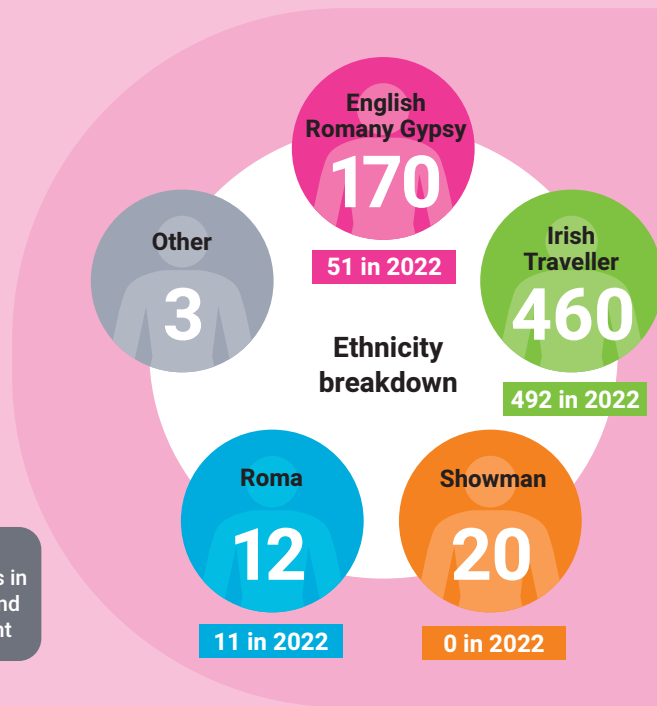
# People we have worked with this year

Over 2023, LGT worked to support 665 individuals in 31 London boroughs, and 47 outside London. This was 113 more than in 2022. We provided advocacy and advice, youth development and community development.



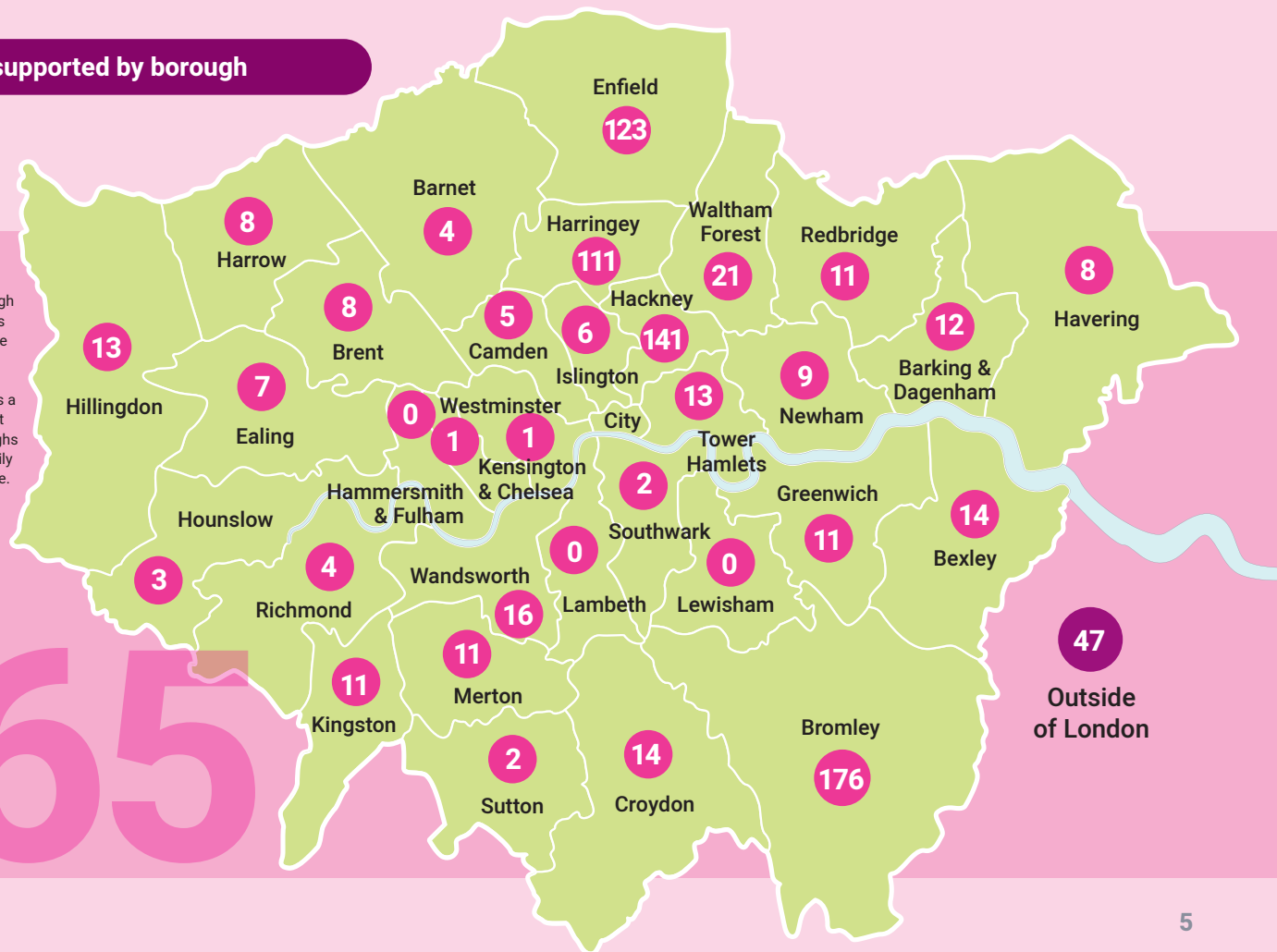
## Community outcomes

Number of people who reported:



## People supported by borough

Note: the borough breakdown does not add up to the total number of people. This is because there is a lot of movement between boroughs and so one family will appear twice.





# Families and the cost of living crisis

The year saw a significant increase in demand for our services, particularly the accommodation advice service. This is due to the combined impact of the housing crisis, the lack of culturally suitable accommodation for Traveller families and an increase in the cost of living – all exacerbated by the increase in energy prices in 2022.



## Energy support

The Government's Energy Bill Support Scheme did little for the families we work with. It was not straightforward for people living on sites to access the scheme, with many relying on bottles of gas rather than mains to fuel their caravans. As a result, the cost-of-living crisis has had a disproportionate impact on Gypsy and Traveller families and the LGT accommodation advice service have had to make an increased number of applications for discretionary crisis grants and support from the Household Support Fund and other local authority sources.



*"The price of the gas bottles has doubled... The problem is that the man who comes on the lorry with the gas doesn't give us receipts and we can't read or write so we cannot do the form on the internet..."*

LGT's community development team has also been involved in supporting community members to access government cost-of-living support. With other organisations such as Friends, Families and Travellers and GATE Herts, we helped Gypsies and Travellers to work with politicians to ensure that nomadic communities are included in support schemes. The community development team also supported community members to have their say at the London Assembly conference on the cost of living, to make sure that the community's needs are included in future support plans from the GLA.

*"I need to apply for the support fund... I'm desperate as the price of my electric and gas has gone through the roof and I have five kids in school as well."*



**362**

families accessed the accommodation advice service

**220**

families supported with housing related issues

**110**

families supported living in temporary accommodation

**Supporting families**

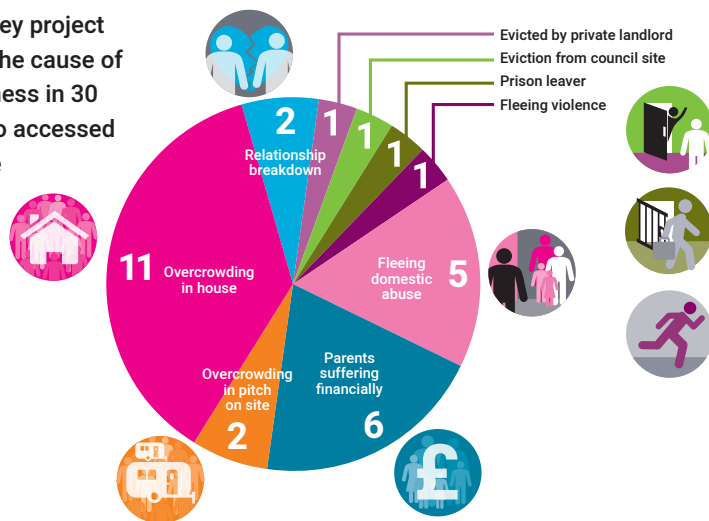
# Homelessness and temporary accommodation

LGT's Hackney Young Travellers Homelessness Project was a one-year scheme providing advice, advocacy and signposting to people aged 18 to 30 in Hackney.

The project also recorded information about who is seeking help and why. It uncovered significant barriers facing homeless young Gypsy, Roma and Traveller people who are trying to access housing services. These included not feeling safe, not feeling heard, language barriers, discrimination and a lack of action in the housing system.

## Main causes of homelessness

The Hackney project identified the cause of homelessness in 30 people who accessed the service



The findings were published in a report, produced with learning partner WSA Community Consultants. LGT showcased the report at a conference organised by Trust for London in September 2023.





*"My landlord now wants the property back and told me they will evict me. I have three children. I don't want to go to a hotel or hostel or live with other people I don't know. I'm scared."*

### Other work on accommodation

- LGT called on the government to take urgent action to improve the lives of Londoners stuck in temporary accommodation in an [open letter](#) sent with the London Housing Panel, London Housing Directors Group and the Deputy Mayor for Housing.
- LGT was one of the organisations highlighting challenges in temporary accommodation as part of the "Better Temporary Accommodation for Londoners" initiative, funded by Trust for London and the Oak Foundation.
- LGT was a member of the steering group for a research project on local authority policy and practice related to temporary accommodation and submitted evidence to the London Assembly Housing Committee's investigation into temporary accommodation.



The LGT team present the study findings at the Trust for London temporary accommodation event

Over the last year, there has been a notable increase in local councils using hotels for temporary housing. Our advice team have been supporting families, who face the distressing uncertainty each day of not knowing where their next placement might be. We have provided assistance to overcome the many bureaucratic hurdles and communication gaps between the family, hotel staff and housing officers and a place of support for families who have been disconnected from their usual support networks.

*"They're saying they are having to move me to a different hotel. I have been in the hotel for three months and they haven't offered me anything."*

Young single mother

# Community development in Bromley

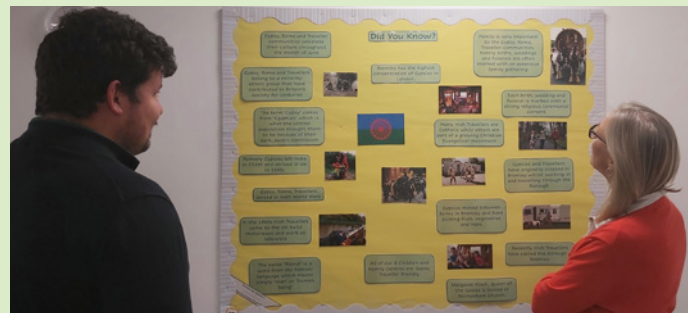
This year LGT significantly widened its reach to new boroughs where there has been little support for Gypsy and Traveller communities.

Our new Bromley Community Project, for example, funded by the Civil Society Roots Fund, brought together Gypsy and Traveller residents across council sites, private sites and housing, so that they could build a stronger collective voice and be better recognised by local services and organisations.

Within its first year, the project reached 176 people, building relationships with community members on sites and in

*"The number of community members we are regularly interfacing with has really surpassed what was originally planned. I look forward to seeing the results come the end of the project next year."*

Tom Margetson of LGT



bricks and mortar, setting up community meetings, making links with other organisations and improving support from Bromley Council. It now has a local office space and a team member from the community to support in delivery.

**176** Within its first year, the project reached 176 people

A green circular icon containing a white silhouette of two people standing and talking, with a speech bubble above them.

## Other community development work

The Community Development Team has continued to work with London residents who are seeking decent living conditions on council sites, improved site management and increased provision of sites and stopping places. Our reach now extends to more than half of London boroughs.

- **Haringey** – restarted regular meetings between councillors, officers and residents on two council sites and in bricks and mortar
- **Greenwich** – started a new project to increase access to amenities for Greenwich Peninsula residents
- **Enfield** – continued to engage with the Gypsy Roma Traveller Boater and Showman Project Board and made submissions to the local plan consultation
- **Hackney** – continued engaging with the council about the delivery of a new site
- **Ealing** – contributed to the local plan consultation on options for new sites
- **Havering** – supported community members to work with legal representatives in a land dispute and to engage with employers and the Metropolitan Police
- **Islington** – worked with the council and community residents on planning for a new site



- **Camden** – supported residents to gain legal representation and support to improve their living conditions
- **Kingston Upon Thames, Sutton, Merton and Wandsworth** – worked with members of the community, politicians and council workers on issues such as the refurbishment, redevelopment and extension of current council sites.

Left: Collaborative work in Enfield

# London-wide policy work

Over the year, LGT continued to encourage engagement between community members and London policy makers. It also contributed to policy development on housing and planning and supported people to take part in the new London-wide Gypsy and Traveller Accommodation Needs Assessment.

## London Gypsy and Traveller Forum

LGT continued facilitating collaboration with London Assembly members through the London Gypsy and Traveller Forum. Its September meeting brought together community members, organisations and London Assembly members to discuss the Forum's manifesto for the 2024 Mayoral election and its proposals on accommodation, mental health and discrimination. The manifesto will be used to engage with candidates in the run-up to the London Assembly elections in May next year.



LGT representatives  
at the London Forum



**During 2023, 14 questions were asked by London Assembly Members as a result of engagement in the Forum**

## London Housing Panel

As a member of the London Housing Panel, LGT contributed to the Planning for London programme. This project facilitates conversations about housing and planning with community groups and Londoners who are in precarious housing or inadequately housed in housing services. LGT used insights from discussions at London Gypsy and Traveller Forum meetings to draw out key issues and recommendations that would improve living conditions for Gypsy and Traveller Londoners.

The findings of 10 different conversations, including with Gypsies and Travellers, were drawn together by Trust for London. These will feed into the GLA's work on the next London Plan.

## London-wide needs assessment

Building on last year's activity publicising the Mayor of London's new London-wide Gypsy and Traveller Accommodation Needs Assessment, LGT promoted the survey and



© TRUST FOR LONDON

supported those living in bricks and mortar housing to complete it. As a member of the needs assessment's steering group, we continued to provide feedback on it to the GLA.

The London Gypsy and Traveller Accommodation Needs Assessment will be published in 2024 and will provide evidence for local authorities and the GLA on the number of homes needed by Gypsy, Traveller, Showmen and Roma communities across London.





# Legal threats to the community

LGT continued its long-running legal challenge to councils' use of "wide injunctions" to prevent Gypsies and Travellers from stopping on public land. Its case, brought with two other Gypsy and Traveller charities and supported by Friends of the Earth and Liberty, came to the UK's Supreme Court in February and the court's ruling was passed down at the end of November.

The court finally ruled that these injunctions can be used by councils to prevent Gypsies and Traveller from stopping on public land – despite LGT's long-held argument that they are disproportionate and unjust.

*"These wide injunctions have really affected my community's way of life. It has devastated us as a community that we will not have freedom to travel."*  
Mena Mongan of LGT

However, the court also said that wide injunctions should only be used in very limited circumstances. Responding to the ruling, LGT said it was pleased that the Supreme Court had outlined strict limits to the use of "persons unknown" injunctions and had recognised that lack of sites and stopping places was the fundamental problem. Wide injunctions offered no real solution.

## Planning definition change

The landmark legal challenge to the government's discriminatory planning definition of Travellers, supported by London Gypsies and Travellers, resulted in victory in October 2022. As a result, the Planning Policy for Traveller sites reverted to the previous definition in December 2023. This version includes Gypsies and Travellers who have stopped travelling permanently due to old age and education or health needs.



# Mentoring for young people

In June this year, LGT took a pause to review the Bright Futures youth programme.

Drawing from the experiences of staff, community members and young people, the review helped identify some of the key barriers for young people, areas where LGT might have impact, and priority areas where we might re-focus activity.

The result was a new and innovative programme, designed specifically to provide mentoring, employability and wellbeing support for young people aged 14 to 25 and not in education, employment or training. The programme aims to enable young people to develop the awareness, motivation, and skills they need to actively engage in wider society with pride and confidence.

## It offers young people:

- one-to-one mentoring tailored to needs and interests
- career guidance and pathways to training and employment



- emotional and mental wellbeing support
- informative and fun group activities and workshops
- safe, relaxed, and positive environments
- long-term engagement and impact.

With a strong focus on mental and emotional well-being, the programme assists young people on the programme to develop coping skills and a positive mindset so that they can face challenges, stay on track and achieve their full potential.

# Celebrating our culture in Parliament

To mark Gypsy, Roma and Traveller History Month, LGT showcased its “Mapping the Histories of London’s Travellers” exhibition and held a reception in the House of Commons hosted by Andy Slaughter, MP.

At the reception, the MP emphasised the important place of Gypsies and Travellers in London life and drew attention to the deep-rooted inequality and enduring discrimination faced by the community. Other speakers at the event included Baroness Janet Whitaker and members of LGT’s community development team.



## Other LGT activities marking Gypsy, Roma and Traveller History Month

- A screening of the film “Nowhere left to turn” followed by a discussion about the issues faced by the community was held at Hackney Town Hall.
- The “Mapping the Histories of London’s Travellers” exhibition toured venues in Bromley and across London.
- A celebratory event at City Hall, including campaigning and artistic contributions from the community.
- A Gypsy, Roma and Traveller History Month flag-raising event was held at Enfield Civic Centre.
- A meeting between Islington councillors with local Traveller residents to discuss how they can better recognise Gypsy, Roma and Traveller communities.

*“We need to see a turnaround in both political will and action. We can achieve that through a greater appreciation of history, an honest assessment of the data available and a mandate from a British public who believe in fairness, justice and respect for all.”*

Andy Slaughter, MP

# Training councils in negotiated stopping

LGT has been developing a training package for London local authorities, aiming to help them use the negotiated stopping approach as a means of facilitating nomadism and addressing issues related to stopping on public land.

Supported by Moving for Change and working in collaboration with WSA Community Consultants, LGT held conversations with local authorities and the GLA to understand what learning resources might be useful. It then



Training for councils in site management hosted by Hackney Council

co-designed a training package, consisting of two modules, which LGT's Community Development team can deliver to councils interested in improving living conditions for Gypsy and Traveller families stopping in their area. The first training day in the series will be hosted by Enfield Council, in January 2024.

LGT's Community Development Team also supported Hackney council to provide training for other councils on best practice in managing council-run sites, as part of a borough network for sharing good practice facilitated by the GLA and a number of local authorities.



# London Gypsies and Travellers team

A big thank you to our brilliant staff team and highly committed trustees.  
Farewell and thank you to those who moved on during 2023.



## Staff

**Debby Kennett**, Chief Executive

---

**Ilinca Diaconescu**,  
Policy and Campaigns Coordinator

---

**Tom Margetson**,  
Community Development Worker

---

**Mena Mongan**, Community Engagement  
Officer

---

**Dan Cash**, Community Campaigns Mentee  
(until November 2023)

---

**Ivana Golianova**, Youth Support Worker  
(until May 2023)

---

**Padmini Ravi**, Project Lead Bright Futures  
Programme (from October 2023)

---

**Geraldine Lindsay**,  
Skills Development Coordinator

---

**Warren Lee**,  
Accommodation Advice and Advocacy  
Worker

---

**Olli Wells**,  
Accommodation Advice Triage Worker

---

## Other support

**Richard Lush**, Administration and  
Operations

---

**Eunice Onyema**, finance

---

**Fran Ferris-Ockwell**, fundraising

---

**Simon Crompton**,  
media and communications

---

**John Gray**,  
community engagement Greenwich

---

## Board of trustees

**Helena Kiely-Savin**,  
Chair

---

**Richard Bennett**, Treasurer

---

**Marian Mahoney**,  
Vice Chair

---

**Tunji Makanju**

---

**Claire Cooper**  
(until Feb 2023)

---

**Sarah Edwards**

---

**Mark Penfold**  
(until May 2023)

---

**Giorgio Mariani**

---

**Chelsea McDonagh**  
(from September 2023)

---



# Accounts

Statement of financial activities (incorporating an income and expenditure account) for the year ended 31st March 2023.

**LONDON GYPSIES AND TRAVELLERS**  
**STATEMENT OF FINANCIAL ACTIVITIES**  
**(INCORPORATING AN INCOME AND EXPENDITURE ACCOUNT)**  
**FOR THE YEAR ENDED 31 MARCH 2023**

	Notes	Unrestricted funds £	Restricted funds £	31.3.23 <b>Total funds £</b>	31.3.22 Total funds £
<b>INCOME AND ENDOWMENTS FROM</b>					
Donations	2	45,250	338,810	384,060	221,743
Investment income	3	1,558	-	1,558	82
Other income	4	4,875	-	4,875	2,250
<b>Total</b>		<b>51,683</b>	<b>338,810</b>	<b>390,493</b>	<b>224,075</b>
<b>EXPENDITURE ON</b>					
<b>Charitable activities</b>					
Policy/ Strategic Development		14,325	85,563	99,888	84,539
Youth		13,890	52,291	66,181	48,474
Community Development		20,504	155,517	176,021	125,615
<b>Total</b>		<b>48,719</b>	<b>293,371</b>	<b>342,090</b>	<b>258,628</b>
<b>NET INCOME/(EXPENDITURE)</b>		<b>2,964</b>	<b>45,439</b>	<b>48,403</b>	<b>(34,553)</b>
<b>RECONCILIATION OF FUNDS</b>					
Total funds brought forward		158,402	14,495	172,897	207,450
<b>TOTAL FUNDS CARRIED FORWARD</b>		<b>161,366</b>	<b>59,934</b>	<b>221,300</b>	<b>172,897</b>



- CAMBRIDGE DICTIONARY DEFINITION: a detailed account giving information about the development of a person, group, or thing, especially in order to show general principles

What makes up a case study?  
Are they used for?  
How do we / might we use them in our work?  
What are the examples you can think of either from your own work or others you've seen?

WSA  
Consultants

BEFORE

DURING

AFTER

London Gypsies and Travellers,  
Mildmay Community Centre,  
Woodville Road, London N16 8NA  
info@londongandt.org.uk  
+44 (0)20 8533 2002

Charity No. 1072111  
Company No 3585698  
© London Gypsies and Travellers 2024  
www.londongypsiesandtravellers.org.uk

**LONDON  
GYPSIES &  
TRAVELLERS**